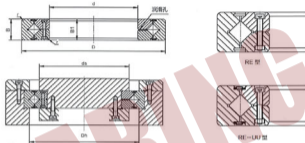


CLI-RE



* CLI-RE 型 (内圈分动、外圈整动) 同样为交叉滚子轴承的基本型, 外形尺寸和 CLI-RB 型相同, 但结构为外圈整动, 内圈分为两片, 它最适用于要求外圈旋转精度的场合。

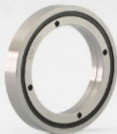
* CLI-RE crossed roller bearing has separable inner ring while outer ring is rotatable. It has the same major dimensions as model CLI-RB. CLI-RE is used in locations where the rotation accuracy of the outer ring is required. It is the best alternative of THK's RE crossed roller bearings.



CLI Part NO.	Bearing Dimensions (mm)			Roller Diameter (mm)	Shoulder Dimensions (mm)			Rated Loading		Weight (kg)	Cross Reference
	ID (d)	OD (D)	W (B)		Dpw	ds	Dh	C	Co		
CLI-RE2008	20	36	8	29	23.5	30.5	3.23	3.1	0.04	RE2008	
CLI-RE2508	25	41	8	34	28.5	35.5	3.63	3.83	0.05	RE2508	
CLI-RE3010	30	55	10	43.5	37	47	7.35	8.36	0.12	RE3010	
CLI-RE3510	35	60	10	48.5	41	51.5	7.64	9.12	0.13	RE3510	
CLI-RE4010	40	65	10	53.5	47.5	58	8.33	10.6	0.16	RE4010	
CLI-RE4510	45	70	10	58.5	51	61.5	8.62	11.3	0.17	RE4510	
CLI-RE5013	50	80	13	66	57.5	72	16.7	20.9	0.27	RE5013	
CLI-RE6013	60	90	13	76	68	82	18	24.3	0.3	RE6013	
CLI-RE7013	70	100	13	86	78	92	19.4	27.7	0.35	RE7013	
CLI-RE8016	80	120	16	101.4	91	111	30.1	42.1	0.7	RE8016	
CLI-RE9016	90	130	16	112	98	118	31.4	45.3	0.75	RE9016	
CLI-RE10016	100	140	16	121.1	109	129	31.7	48.6	0.83	RE10016	
CLI-RE10020	100	150	20	127	113	133	33.1	50.9	1.45	RE10020	
CLI-RE11012	110	135	12	123.3	117	127	12.5	24.1	0.4	RE11012	
CLI-RE11015	110	145	15	129	122	136	23.7	41.5	0.75	RE11015	
CLI-RE11020	110	160	20	137	120	140	34	54	1.56	RE11020	
CLI-RE12016	120	150	16	136	127	141	24.2	43.2	0.72	RE12016	
CLI-RE12025	120	180	25	152	133	164	66.9	100	2.62	RE12025	
CLI-RE13015	130	160	15	146	137	152	25	46.7	0.72	RE13015	
CLI-RE13025	130	190	25	162	143	174	69.5	107	2.82	RE13025	
CLI-RE14016	140	175	16	160	147	162	25.9	50.1	1	RE14016	
CLI-RE14025	140	200	25	172	154	185	74.8	121	2.96	RE14025	

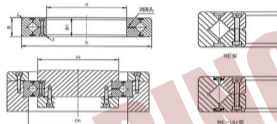
*** NOTES: 1) Bearings with seals are CLI-RE-UU; 2) Please select inner ring's rotation way when needs higher precision bearings.

CLI-RE



* CLI-RE 型 (内圈分体、外圈整体) 同样为交叉滚子轴承的基本型, 外形尺寸和 CLI-RG 型相同, 但结构为外圈整体, 内圈分为两片, 它最适用于要求外圈旋转精度的场合。

* CLI-RE crossed roller bearing has separable inner rings while outer ring is rotatable. It has the same major dimensions as model CLI-RG. CLI-RE is used in locations where the rotation accuracy of the outer ring is required. It is the best alternative of THK's RE crossed roller bearings.



CLI Part NO.	Boundary Dimensions (mm)			Roller Diameter (mm)	Shoulder Dimensions (mm)		Rated Loading		Weight (kg)	Cross Reference THK
	ID (d)	OD (D)	W (B)		D _w	d _s	D _h	C		
CLI-RE15013	150	180	13	166	158	172	27	53.5	0.68	RE15013
CLI-RE15025		210	25	182	164	194	76.8	128	3.16	RE15025
CLI-RE15030		230	30	192	173	210	100	156	5.3	RE15030
CLI-RE16025	160	220	25	192	173	204	81.7	135	3.14	RE16025
CLI-RE17020		170	220	20	196.1	184	198	29	62.1	2.21
CLI-RE18025	180	240	25	210	195	225	84	143	3.44	RE18025
CLI-RE19025		190	240	25	219	202	222	41.7	82.9	2.99
CLI-RE20025	200	280	25	230	215	245	84.2	157	4	RE20025
CLI-RE20030		280	30	240	221	258	114	200	6.7	RE20030
CLI-RE20035		285	35	247.7	225	270	151	252	9.6	RE20035
CLI-RE22025	220	280	25	250.1	235	265	92.3	171	4.1	RE22025
CLI-RE24025		240	300	25	272.5	256	281	68.3	145	4.5
CLI-RE25025	250	310	25	280.9	268	293	69.3	150	5	RE25025
CLI-RE25030		330	30	287.5	269	306	126	244	8.1	RE25030
CLI-RE25040		355	40	300.7	275	326	195	348	14.8	RE25040
CLI-RE30025	300	360	25	332	319	344	76.3	178	5.9	RE30025
CLI-RE30035		395	35	345	322	368	183	367	13.4	RE30035
CLI-RE30040		405	40	351.6	326	377	212	409	17.2	RE30040
CLI-RE35020	350	400	20	376.6	363	383	54.1	143	3.9	RE35020
CLI-RE40035		480	35	440.3	422	459	156	370	14.5	RE40035
CLI-RE40040	400	510	40	453.4	428	479	241	531	23.5	RE40040
CLI-RE45025		450	500	25	476.6	464	484	61.7	182	6.6
CLI-RE50025	500	550	25	526.6	514	534	65.5	201	7.3	RE50025
CLI-RE50040		600	40	548.8	526	572	239	607	26	RE50040
CLI-RE50050		625	50	561.6	536	587	267	653	41.7	RE50050
CLI-RE60040	600	700	40	650	627	673	264	721	29	RE60040

*** NOTES: 1) Bearings with seals are CLI-RE...UU; 2) Please select inner ring's rotation way when needs higher precision bearings.